



### P1 GRAND START

The event kick started with active participation from academia as well students from XLRI,



### P2 ABOUT SC NEXT

A confluence point of students, young professionals and mentors.



### P4 NEUF OPPORTUNITIES

A global community for knowledge sharing and a plethora of opportunities for the SCNext members

**XLRI**

# SCNEXT

ORGANISED BY AXIOM

2014



For the launch of SCnext the small audi at XLRI Jamshedpur witnessed a bracket of 52 minds eager to be informed about the current trends and practices in supply chain management. The Webinar was organised by the team AXIOM of XLRI.

The introduction of SC Next was held at university premises of XLRI on 4<sup>th</sup> August 2014. It was taken very enthusiastically by the students interested in operations with an active participation.

There was a webinar addresses by Mr. Nikhil Oswal, EVP, SC Next India. After the webinar there was a question answer session where students got the opportunity to get their doubts cleared regarding SC next .

Towards the end of the launch there was a small quiz for all the audience about some recent happenings in operations. All the students voiced out their answers to claim the goodies!

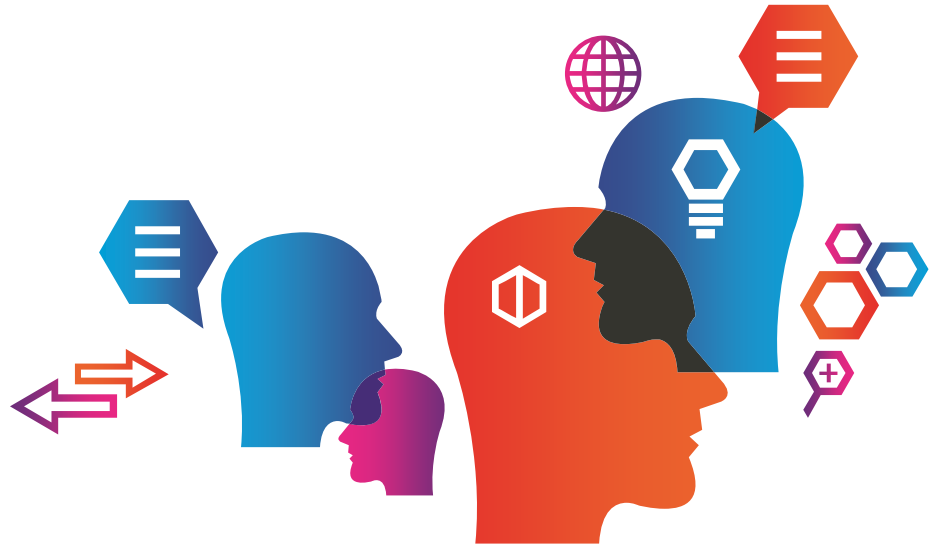


The event grandly kick started with a group of more than 50 enthusiasts keen upon the supply chain practices coming”

# About SCNext

In early June of 2013, the confluence of vision, resources and timing sparked the creation of the SCNext (Supply Chain Next), previously the ISCEA Students and Young Professionals group. Currently it is operational across countries and many universities. It provides members with an opportunity to develop relationships with an international community of peers and mentors, expand their knowledge of the supply chain industry, and apply their knowledge and skills in real world situations.

It helps students gain real world supply chain and logistics skills and young industry professionals connect and learn from each other. It is a confluence point of these two tiers and the seasoned supply chain executives in a mentor/mentee relationship and offer a chance to groom the next gen. leaders of supply chain.



“ Expand knowledge of the supply chain industry and a confluence point of students, young professionals and mentors ”

Its goals are to connect and leverage the social era for improving knowledge sharing in an ever evolving complex global supply chain environment. It also connect these young leaders globally to uplift the status quo on supply chain possibilities.

With this unique social network , it provides members with the resources and opportunities to enhance and share their Supply Chain knowledge while simultaneously honing their leadership skills.



## Integrating Social Media

NETWORKING

Facebook: AXIOM XLRI

Website for ScNext : [www.scnext.org](http://www.scnext.org)



## GLOBAL COMMUNITY: forum for knowledge sharing



### WEBINAR UPDATE

#### TECH WEBINAR A HIT

In the Webinar Mr. Nikhil Oswal talked about the organization and its role in supply chain management and how it connects people in the domain of operations. He proceeded with giving information about the membership of SC next, its procedure and the services provided to the students as well as professionals. He also gave statistics on SC Next's outreach and the different universities it is currently operational in.



### Opportunities offered to SC Next members

SC Next members get discounts on ISCEA certifications for the world renowned CSCA, CSCM and CLSSYB programs. They get to participate in the annual case study competition via Ptak Prize on complex supply chain issues which is a prestigious award. They are eligible to attend many knowledge sharing sessions, forums, events and Conferences taken by industry experts. It is hugely advantageous for the members having ideas but lacking in capital. SC next is there to help with \$1 million funding for its members. Further on also members will have access to SCNext resources to help build and grow the company.



XLRI, CIRCUIT HOUSE EAST JAMSHEDPUR



OPERATIONS CLUB AT XLRI

